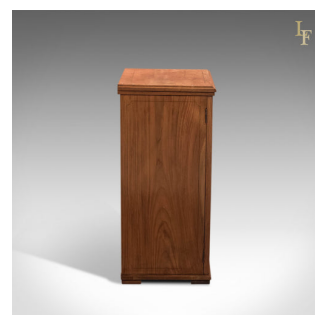


## Antique Music Cabinet, Early Victorian c1850



### DESCRIPTION

Our Stock # LFA-1471 This is an antique music cabinet dating to the early Victorian period c.1850. A superior example in choice cuts, this music cabinet displays beautifully and sings quality throughout. Raised on slender, modest square feet beneath lower moulding, the glazed door panel is framed in burr walnut with blind trace. Repeated in the walnut side panels, the trace frames each panel beautifully with arced corners and centre point. The working lock and key releases the door from the right hand side panel to reveal three, removable shelves delineated with a subtle, blind, horizontal flute, each with the original, and now indistinct, centre label. The moulded edge top is resplendent in a single slice of well figured burr walnut, again featuring the blind trace border and dotted with mother of pearl inlay. A fine cabinet in very good order, solid joints and construction, delivered waxed, polished and ready for the home.

Search [London Fine for #LFA-1471](#) or scan the QR code for more photos and details

### DIMENSIONS

Max Width: 48cm (19")  
 Max Depth: 37cm (14.5")  
 Max Height: 81cm (32")

