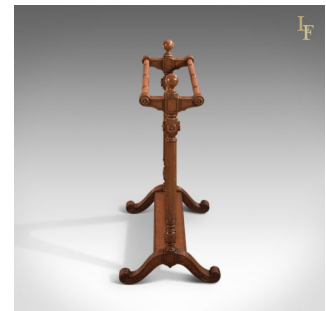


## Antique Towel Rail, Large Victorian Stand c.1850



### DESCRIPTION

Our Stock # LFA-1474

This is a Scottish antique towel rail from the Victorian era c1850.

An impressive size and much larger than most this is a fine quality piece made in good cuts of oak and displaying warm honey tones and a desirable aged patina.

Raised on broad, fluted cabriole legs with scrolled toes united by a platform stretcher, the lower turnings foot tapered octagonal section risers up to the boxed joints holding the lower central rail.

The upper two, ring turned rails are held by the stout, fluted brackets beneath high quality ball finials.

Aesthetically pleasing and superior quality, solid joints and construction. Delivered waxed, polished and ready for the home.

Search [London Fine](#) for #LFA-1474 or scan the QR code for more photos and details

### DIMENSIONS

Max Width: 85cm (33.5")

Max Depth: 48.5cm (19")

Max Height: 102cm (40.25")

