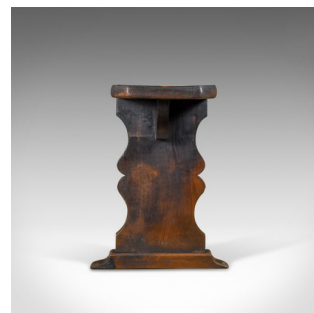


Antique Tavern Bench, Victorian, English Oak, Six Seater Form, Circa 1880



DESCRIPTION

Our Stock # 11.3507

This is an antique tavern bench, a Victorian, English oak, six seater form dating to circa 1880.

- Attractive grain interest in the stout 1 1/4" planked top
- Dark honey hues displaying a blackened fireside patina
- Canted corners softening the aesthetics
- Traditional vase form legs standing upon shaped block feet
- Through mortice joints so typical of it's type
- 'T' stretcher for super strong support along it's length

Offering a comfortable seat at a generous 47cm seat height. Solid joints and construction, delivered waxed, polished and ready for the home.

Search [London Fine for #11.3507](#) , or scan the QR code for more photos and details

DIMENSIONS

Max Width: 225cm (88.5")

Max Depth: 24cm (9.5")

Max Height: 47cm (18.5")

