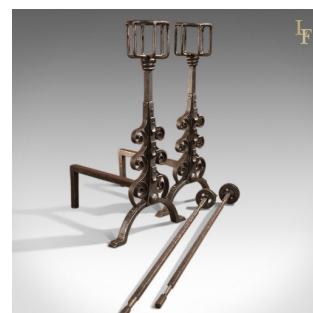
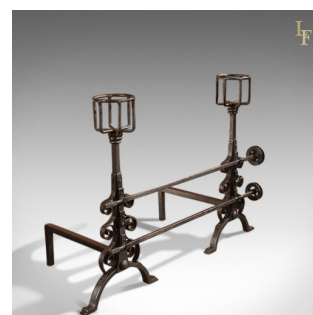


Antique Fire Dogs with Twin Wheel Spits & Cup Dogs



DESCRIPTION

Our Stock # LFA-1488 This is an antique pair of fire dogs dating to the end of the Victorian period c.1900. A fine pair of iron dogs with arched front feet for stability, the front posts rise high with scrolled decoration up to a pair of cup dogs; originally used to keep small pots or drinks warm. The front of each post has three spit racks to accommodate the spits in various positions. At the end of each rod is a wheel that would have been used to turn the spit by means of either a smoke-jack, a device that generated movement from the chimney draught, or a separate dog wheel where a small dog would have been in something akin to a hamster wheel to generate the motive force. Polished in a traditional graphite finish these dogs are supplied ready for the home.

Search [London Fine for #LFA-1488](#) or scan the QR code for more photos and details

DIMENSIONS

with spits in position:

Max Width: 130cm (51.25")

Max Depth: 51cm (20")

Max Height: 86cm (33.75") Dog dimensions with spits in place (for basket):

Max Width: 89cm (35")

Max Depth: 44cm (17.25")

Max Height: 20.5cm (8")

